

Lumby & District Chamber of Commerce

Membership Information



1882 Vernon Street, Lumby, BC

T: 250.547.2300

F: 250.547.2390

lumbychamber@shaw.ca

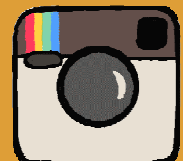
www.monasheetourism.com



@LumbyChamber



Lumby & District
Chamber of Commerce



@TourismLumby

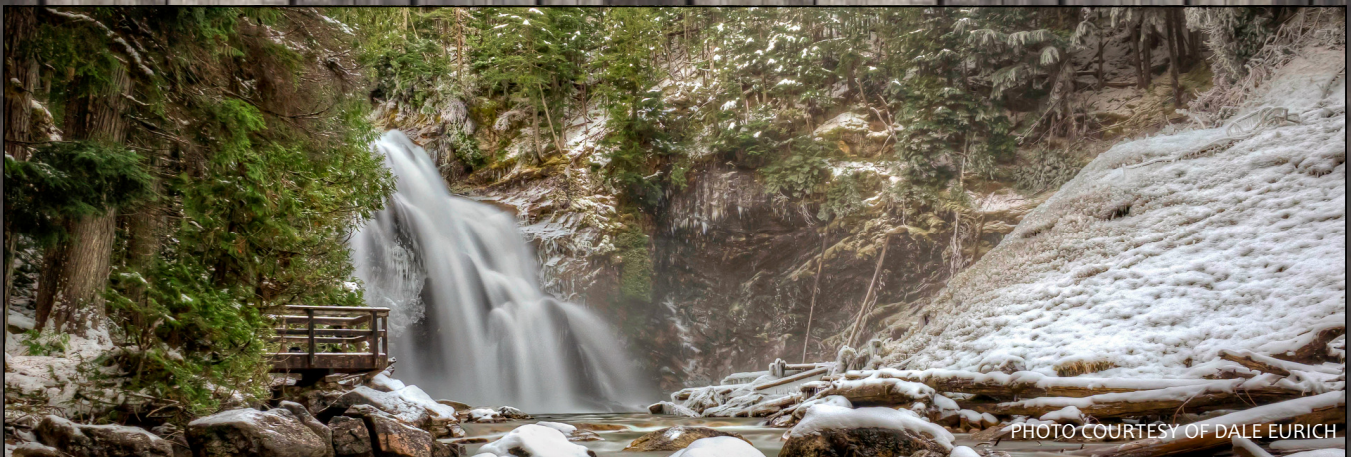
Welcome from the Lumby Chamber

Thank you for taking an interest in our local Chamber. We are proud to be part of the wonderful village of Lumby and the unique communities that surround it. Our beautiful little corner of the world is home to incredible recreation opportunities, talented artisans, delicious locally made food items and all the amenities a person could ever need. There is always room for growth around here, with a few new businesses establishing themselves every year. Our Chamber always has community projects on the go and is open year-round for visitor and business services. We provide public computers and internet access, as well as basic computer help. Stop by for a chat, send us an email or give us a call!

Sincerely,

Bill Maltman

(President, Lumby & District Chamber of Commerce)



3 WAYS

the Chamber of Commerce helps your business

Did you know...
consumers are more likely to purchase goods & services from a business if they know they are a chamber member!

A

ADVOCATE

As a member driven organization, the Chamber is able to advocate on your behalf and represent business owners on issues that matter to them.

C

CONNECT

Whether it's through our networking events, online advertising or partner opportunities, the Chamber connects you to people that matter in our community!

E

EDUCATE

The Chamber provides professional development opportunities and resources to educate you on relevant business topics.

Membership Rates

Business:

- 0-5 employees.....\$120.00
- 6-10 employees.....\$145.00
- 11-20 employees.....\$195.00
- 21+ employees.....\$270.00

Individual/non-profit/
service club/artisan.....\$55.00

\$5.00 of each membership is contributed directly to Lumby & District Chamber of Commerce scholarships

—Join Now—

THE VOICE OF BUSINESS

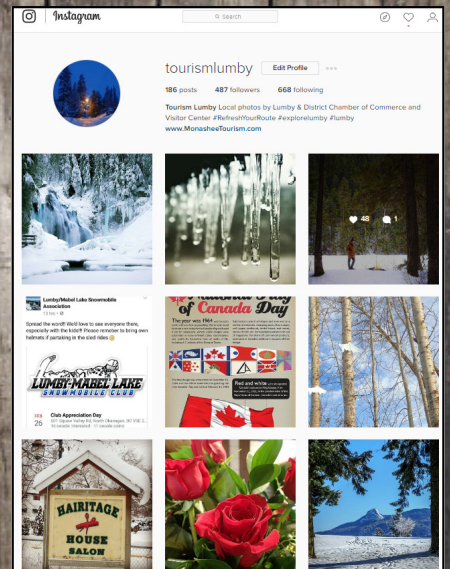
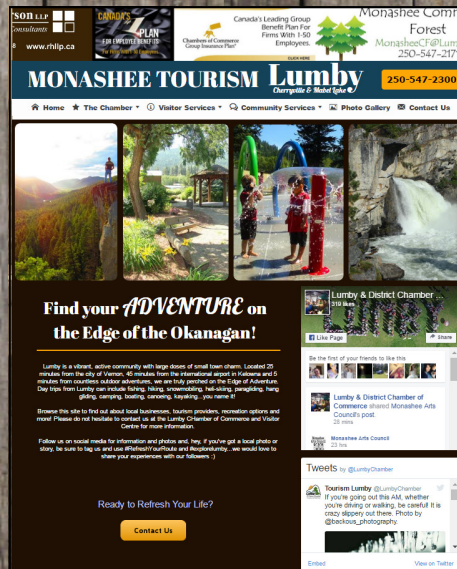
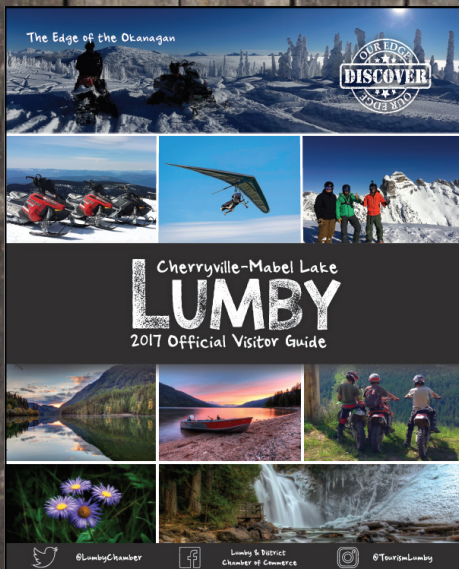


For better business
call 250.547.2300



Visitor/Community Services Provided by the Chamber:

- Destination Marketing (more information on next page) through print materials
- A digital, interactive information kiosk
- Provide and train community ambassadors
- Free guided salmon trail tours during the summer months
- Active social media feeds for the community on Twitter, Facebook and Instagram
- Movies in the Park during the summer
- Organize annual Community Showcases
- Represent the community at provincial tradeshows
- Print and distribute relocation packages for newcomers
- Public computers and internet access
- Basic computer help and guidance
- ...and so many more projects completed in the past and more to come in the future!



..... —————> *You are the Chamber* <—————

Your membership is an investment in your Chamber and your community. The return on that investment comes through the work the Chamber does to better the community. Direct benefits to you as a Chamber of Commerce member include:

- A voice in the growth and prosperity of your community and in the activities, goals and direction of the Chamber
- Opportunities to network and establish business contacts
- A year-round Visitor Centre & Chamber office with public computers and internet access
- Brochure & business card racking privileges at the Visitor Centre & on the Needles Ferry
- Listings in free publications (Annual Visitor Guide, Business Directory, map)
- Inclusion in the listing of members on the monasheetourism.com website, as well as listings on HelloBC, Thompson Okanagan Tourism website and the BC Chamber website
- General meetings with guest speakers
- Referral of member businesses in response to inquiries at the Visitor Centre
- An opportunity to promote business and tourism in the area

In addition to the regular business benefits the Chamber offers, the Chamber will continue its entire array of other opportunities. In order to support some of these initiatives there may be additional costs related to them. Please read through these exciting opportunities and take the time to indicate and return your selections as you join a growing and dynamic Chamber!

Please indicate which benefits you would be interested in participating in:

- Become part of the local ChamberCard Program
- An enhanced listing space in our annual business directory
- Become a member of our Executive Board and contribute at meetings
- Advertising opportunities in our annual Visitor Guide (deadline January of each year)
- Participation in our annual Golf Tournament
- Advertising on our East and West end signage project
- Opportunity to attend Business After 5 events
- Attendance at business networking breakfasts
- Booth space at the Lumby and District Annual Community Showcase

BC Chamber of Commerce Membership Benefits

YOUR MEMBERSHIP CAN SAVE YOU \$\$\$, WITH ACCESS TO EXCLUSIVE MEMBER RATES ON:

- Employee Benefit Plans
- Online payroll & human resources programs
- Hotels & car rentals worldwide
- Electronic payment processing & merchant services
- Business supplies
- Online marketing management
- Business training programs
- Fuel discount programs
- And much more!

SPECIAL RATES, DISCOUNTS AND PRICING AVAILABLE AT THESE BUSINESSES:



VISIT www.bchamber.org FOR MORE INFO!

Photo courtesy of Kingfisher Heli Skiing



Photo courtesy of Kingfisher Heli Skiing



ChamberCard

How does ChamberCard work?

As a Chamber member you offer your merchandise or service with some type of incentive to fellow Chamber members. Be as creative as you like! Examples that we've seen are 10%-20% off, buy one get one half price, discounted consultations or first time purchases...whatever you choose, it will be appreciated.

What are the benefits?

- Advertising
- Free marketing
- More customers
- Networking
- Savings
- Word of mouth referrals

If you are interested in participating as a member of ChamberCard, please complete the application form below and email or fax it to the Lumby Chamber.

THE CHAMBERCARD

Company Name: _____

Contact Name: _____

Telephone: _____

Fax: _____

Email: _____

Description of Discount: _____

BC Chamber of Commerce Membership Benefits

- Preferred rates on the electronic processing of VISA (1.49%) MasterCard (1.49%), Discover (1.60%) and debit cards (\$0.05/transaction) through First Data Canada
- A fuel discount (\$0.035 per litre)—offered to the company and its employees—at all Canadian ESSO-branded service stations
- Home, auto, travel and pet insurance through Johnson Inc.
- Mystery shopper program through Competitactics
- SME-oriented online training courses through the Chamber eLearning Centre
- Export advice and guidance provided at no cost by our in-house Trade Commissioner
- 1-800-Member Business Savings Programs:
 - A savings program that offers member's savings up to 30% off the everyday public web price of Lenovo's entire product line.
 - Novexco offers up to 90% savings on industry leading office products to make work a better place. Novexco is the largest Canadian-owned national distributor of office products and workplace solutions in Canada.
 - Discounts of 30% on shipments within Canada and to worldwide destinations, 25% on imports into Canada and 75% (starting at) on freight shipments services with the UPS® Savings Program.
 - 'Get More' Member Card from The UPS Store

VISIT www.chamber.ca FOR MORE INFO!



PO Box 534, Lumby, B.C. V0E 2G0
 Tel: (250) 547-2300 Fax: (250) 547-2390
 Email: lumbychamber@shaw.ca
 www.monasheetourism.com

CHAMBER MEMBERSHIP INVESTMENT 2017

January 1 to December 31, 2017

Please make every effort to fill in correctly as we use this information on our Website and in the Business Directory

Business Name			
Contact Person			
Street Address			
Mailing Address			
City		Postal Code	
Business Telephone	()	Business Fax:	()
Email Address	please include for correspondence please feel free to list up to three emails with your organization		
Web Site Address:			
No. of Employees			
Nature of Business			

Please indicate with (X) the best way to send communications

Phone Fax Email

Early Bird Membership Fees until February 28, 2017

Effective March 1, 2017

Business:	0 - 5 Employees.....\$ 110.00	0 - 5.....\$120.00
	6 - 10 Employees.....\$ 132.00	6 - 10.....\$145.00
	11 - 20 Employees.....\$ 177.00	11 - 20.....\$195.00
	21 + Employees\$ 244.50	21 +.....\$270.00

Individual/Non-Profit/Service Club/Artisan..... \$ 51.00 Others.....\$ 55.00

NOTE: \$5.00 OF EACH MEMBERSHIP IS CONTRIBUTED DIRECTLY TO LUMBY & DISTRICT CHAMBER OF COMMERCE SCHOLARSHIPS

Membership Investment 2017 Lumby & District Chamber & B.C. Chamber of Commerce and Canadian Chamber of Commerce (Amount from Schedule Above) \$ _____

Please contact the office for further information as required

Needles Ferry Racking

Website Banner Advertising

*(Optional) \$ **30.00

***(Optional) \$ **65.00

TOTAL* \$ _____

*Please return a copy of the completed invoice with payment

Office Use Only:

Amount Paid: \$ _____

Cheque No.: _____

Date Paid: _____

Membership No.: 17 - _____